

COMPONENTS

NATURE'S INSTRUMENTS NI-PG-501-02 2-TIER LOG PLANTER BOX 1829mm [72"] LENGTH.

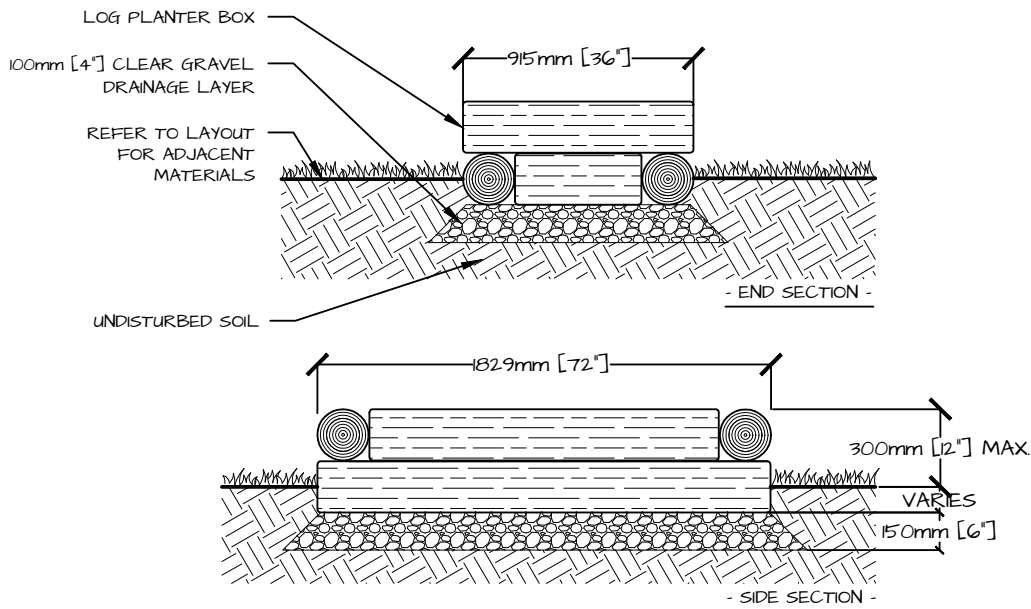
NI PACKAGE INCLUDES:

- ASSEMBLED LOG PLANTER
  - WITH PRE-INSTALLED GEO-TEXTILE LINER

GRAVEL BASE AND GARDEN SOIL ARE NOT SUPPLIED.

NOTES

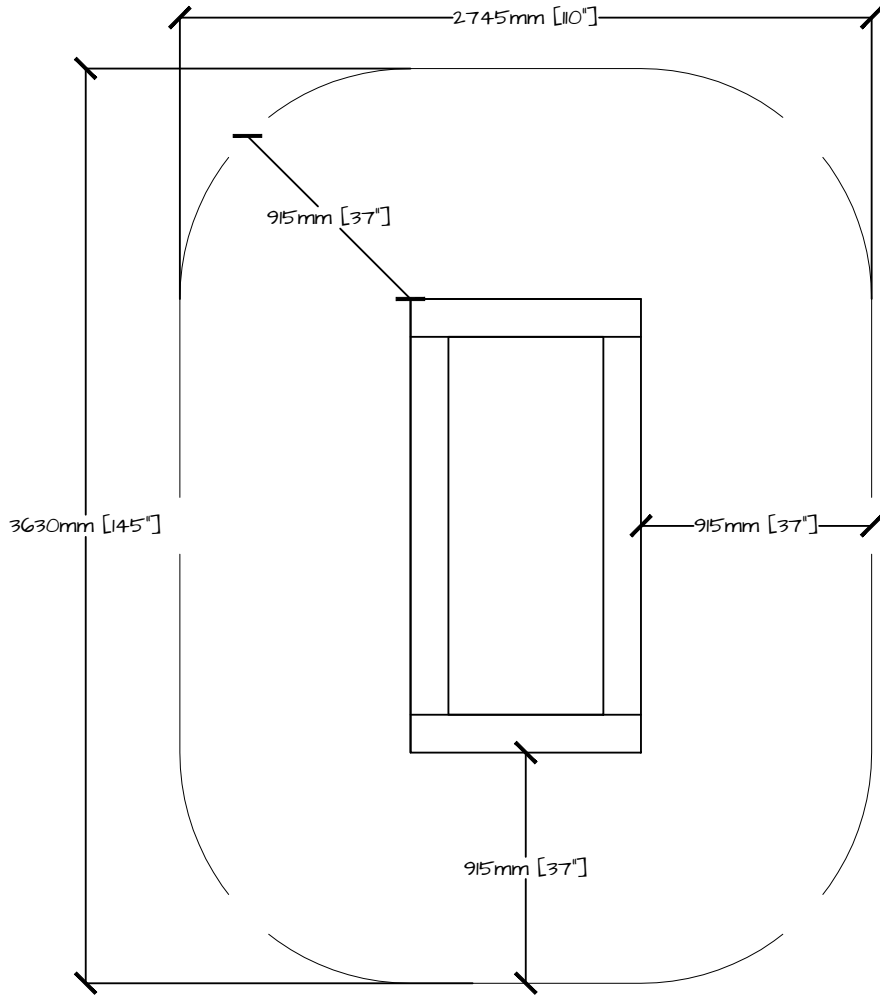
1. INTENDED USE: 2-TIER LOG PLANTER BOX (6) IS TO BE USED WITH FEET PLANTED FIRMLY ON THE GROUND.
2. LAYOUT TO ALLOW FOR CIRCULATION, IT IS RECOMMENDED THAT 915mm [36"] BE ALLOCATED AROUND ALL SIDES OF PLANTER.
3. LOG PLANTER SHALL BE INSTALLED SO THE TOP TIER DOES NOT EXCEED 300mm [12"] ABOVE FINISHED GRADE.
4. LOG PLANTER SHALL NOT BE PLACED ON ANY FOOTING OR FOUNDATION.
5. IF THE PLANTER IS TO BE INSTALLED ON A HARD SURFACE, CONTRACTOR MUST INSTALL 100mm [4"] OF CLEAR GRAVEL SURROUNDED BY GEOTEXTILE IN BOTTOM OF PLANTER FOR DRAINAGE (INSTEAD OF BELOW PLANTER AS SHOWN IN DRAWING).
6. GEOTEXTILE IS PRE-INSTALLED ON THE INSIDE OF THE LOG PLANTER TO CONTAIN GROWING MEDIUM.
7. FILL PLANTER WITH PREMIUM GROWING MEDIUM
8. PLANTS AND PLANTING BY OTHERS.



DETAIL

2 TIER LOG PLANTER BOX: 1800mm [72"] LENGTH

PRODUCT NUMBER	PAGE	SCALE @ .05x1	DRAWN	CHECKED	PHONE NUMBER
NI-PG-501-02	1 OF 1	NT.S.	RI	SE	1-877-733-7459



DETAIL

2 TIER LOG PLANTER BOX 1800mm [72"] - LAYOUT

PRODUCT NUMBER	PAGE	SCALE @ .05x1	DRAWN	CHECKED	PHONE NUMBER
NI-PG-501-02	1 OF 1	NT.S.	RI	SE	1-877-733-7459

COPYRIGHT © 2016 NATURE'S INSTRUMENTS. DO NOT SCALE DRAWINGS. NOT FOR COMMERCIAL USE OR REPRINT WITHOUT EXPRESSED WRITTEN PERMISSION FROM NATURE'S INSTRUMENTS.