

COMPONENTS

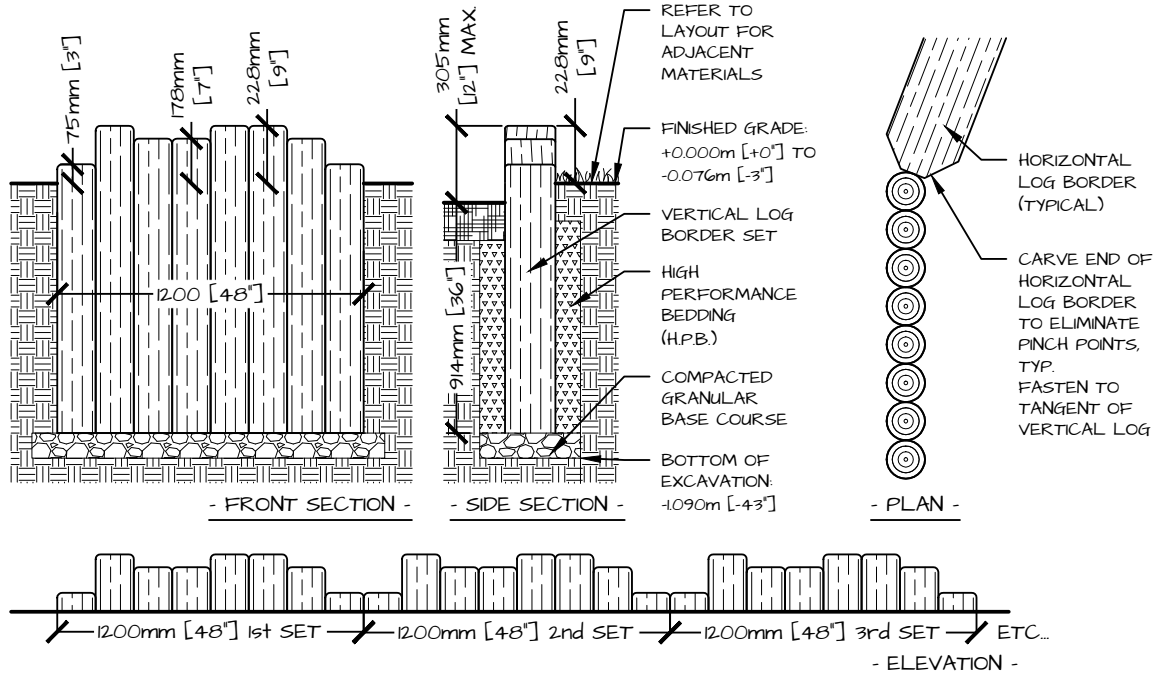
NATURE'S INSTRUMENTS NI-PG-606-01 VERTICAL LOG BORDER - 1200mm [48"] LENGTH SET. NI PACKAGE INCLUDES:-

- PRE-ASSEMBLED 1200mm [48"] LENGTH SET OF VERTICAL LOGS: x 1 SET
- FASTENERS FOR END ATTACHMENTS: x 4

GRANULAR BASE COURSE AND HIGH PERFORMANCE BEDDING AND HORIZONTAL LOG BORDER ARE NOT SUPPLIED.

NOTES

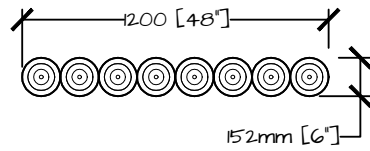
- ALL LOGS ARE SANDED AND FREE OF LIMBS AND SPLINTERS. THE TOPS OF EACH LOG ARE SANDED WITH CHAMFERED EDGES TO BRING OUT THE RINGS.
- INSTALL BORDER ACCORDING TO THE LAYOUT PLAN
- ELEVATIONS OF BORDER TO BE INSTALLED SO THAT THE LOWEST PORTION OF THE BORDER IS 75mm [3"] ABOVE THE FINISHED SURFACE.
- DIG A TRENCH 400mm [6"] WIDE BY 1090mm [43"] DEEP. IF TRENCH WILL REMAIN OPEN WHEN INSTALLATION CREWS ARE NOT PRESENT, BE SURE TO FENCE OR OTHERWISE SECURE THE AREA TO PREVENT FALLS INTO THE TRENCH.
- GRANULAR BASE COURSE TO BE 100mm [4"] DEPTH OF CRUSHED GRAVEL (OR 3/4" CLEAR GRAVEL) COMPACTED TO 98% SPPD.
- PLACE EACH LOG SET INTO THE TRENCH. ABUT SETS TOGETHER.
- ENSURE EACH SET IS PLUMB.
- VERTICAL LOG BORDER SETS SHOULD BE ATTACHED AT BOTH ENDS TO ADJACENT BORDER OR STRUCTURE.
 - USE SUPPLIED FASTENERS ON AN ANGLE TO ENSURE SECURE ATTACHMENT.
 - ALL FASTENERS MUST BE INSTALLED BELOW FINISHED GRADE.
- BRACE LOG SETS IN POSITION AND BACKFILL TRENCH WITH HIGH PERFORMANCE BEDDING (HPB).
- RESTORE ADJACENT SURFACING TO PRE-CONSTRUCTION CONDITION UNLESS OTHERWISE SPECIFIED.



DETAIL

VERTICAL LOG BORDER: 150mm [6"] Ø X 1200mm [48"] LENGTH SET

PRODUCT NUMBER	PAGE	SCALE @ 0.5X	DRAWN	CHECKED	PHONE NUMBER
NI-PG-606-01	1 OF 1	NT.S.	RI	SE	1-877-733-7459



DETAIL

VERTICAL LOG BORDER: 150mm [6"] Ø X 1200mm [48"] LENGTH SET

PRODUCT NUMBER	PAGE	SCALE @ 0.5X	DRAWN	CHECKED	PHONE NUMBER
NI-PG-606-01	1 OF 1	N.T.S.	RI	SE	1-877-733-7459

COPYRIGHT © 2016 NATURE'S INSTRUMENTS. DO NOT SCALE DRAWINGS. NOT FOR COMMERCIAL USE OR REPRINT WITHOUT EXPRESSED WRITTEN PERMISSION FROM NATURE'S INSTRUMENTS.