

\*NOTE - FOOT PRINT MAY VARY DUE TO DIAMETER OF THE BOULDER\*



## DOUBLE BOULDER CLIMBER WITH SHIP-ROPE

PRODUCT NUMBER  
NI-PG-903-03

## LAYOUT PLAN

PAGE	SCALE @ 8.5x11	DRAWN	CHECKED	PHONE NUMBER:
1 OF 1	1:50	RC	PR	1-877-733-7456

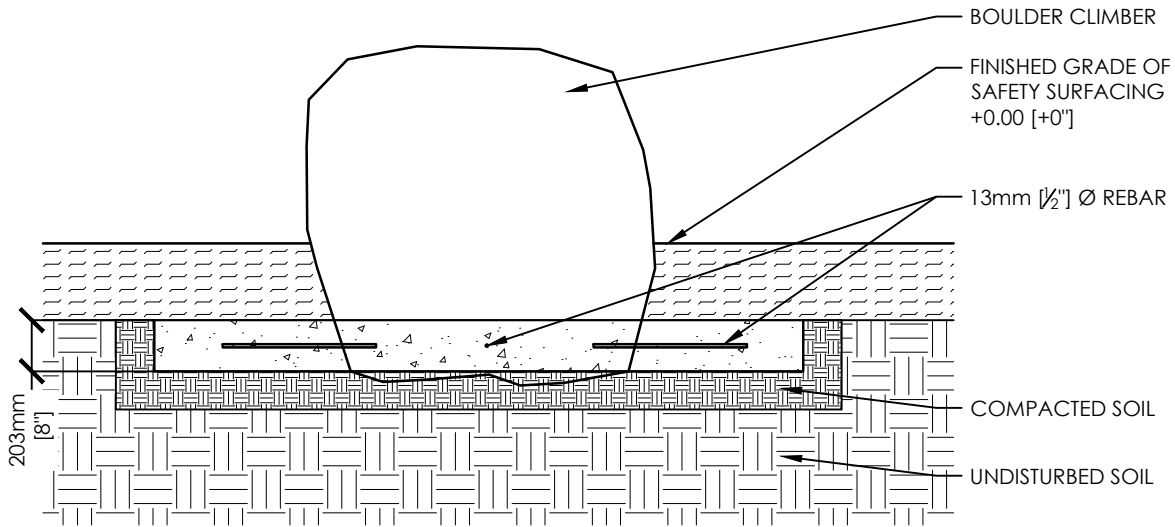
COMPONENTS

- NATURE'S INSTRUMENTS NI-PG-903-01 DOUBLE BOULDER CLIMBER INCLUDES:-
  - GRANITE BOULDER WITH FLAT BOTTOM & PRE-ATTACHED GALVANIZED BOULDER CLEATS: x2
  - 13mm [½"] Ø x 203mm [8"] GALVANIZED THREADED ROD WITH NUT & WASHER: x16
  - REDHEAD A7 ACRYLIC EPOXY
  - STEEL-CORE SHIP-ROPE WITH PRE-ATTACHED D-SHACKLES: x1
  - HEAT SHRINK

GRAVEL, CONCRETE, WIRE MESH REINFORCEMENT & PROTECTIVE SAFETY SURFACING ARE NOT SUPPLIED.

INSTALLATION

1. BOULDER SHAPES AND SIZES VARY; INSTALLED HEIGHT OF BOULDER TO BE NO TALLER THAN 1830mm [72"] ABOVE FINISHED GRADE.
2. BOULDER MUST BE PLACED AT LEAST 1830mm [72"] AWAY FROM ADJACENT OBJECTS AND MUST HAVE A PROTECTIVE SAFETY SURFACE SUITABLE FOR A 2438mm [96"] FALL HEIGHT, REFER TO CONSULTANTS RECOMMENDATIONS.
3. SUBGRADE TO BE MECHANICALLY COMPACTED.
4. CONCRETE PAD TO BE 203mm [8"] THICK AND MUST EXTEND A MINIMUM OF 305mm [12"] BEYOND ALL SIDES OF THE BOULDER.
5. ALL STEEL REINFORCEMENT MUST HAVE AT LEAST 51mm [2"] CONCRETE COVERAGE.
  - 5.a. PLACE BOULDER ON COMPACTED SOIL.
6. ½" REBAR TO BE DRILLED 6" INTO BOULDER AS PER LAYOUT AND TIE TOGETHER.
7. TOP OF THE CONCRETE TO BE BELOW BOTTOM OF PROTECTIVE SAFETY SURFACE.

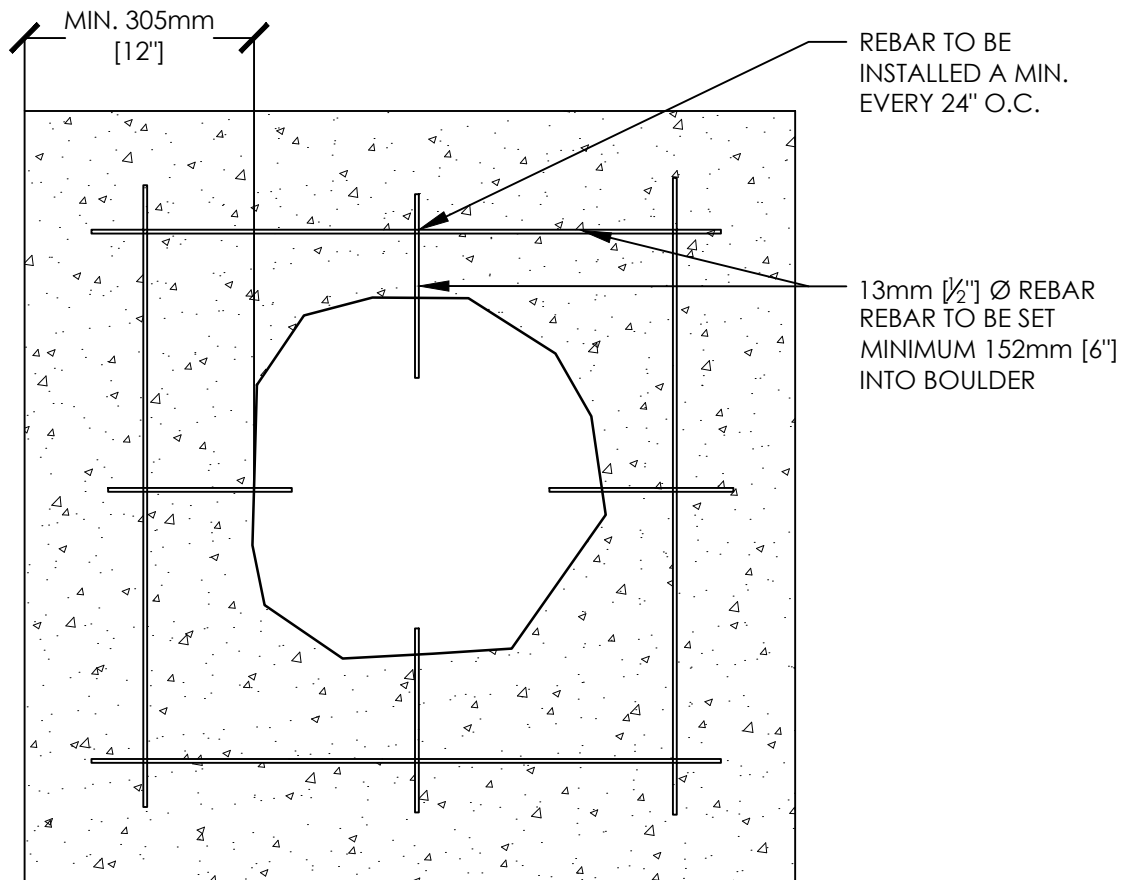


DOUBLE BOULDER CLIMBER WITH SHIP-ROPE

PRODUCT NUMBER  
NI-PG-903-03

INSTALL DRAWING

PAGE	SCALE @ 8.5x11	DRAWN	CHECKED	PHONE NUMBER:
1 OF 2	1:30	RC	PR	1-877-733-7456



DOUBLE BOULDER CLIMBER WITH SHIP-ROPE

PRODUCT NUMBER  
NI-PG-903-03

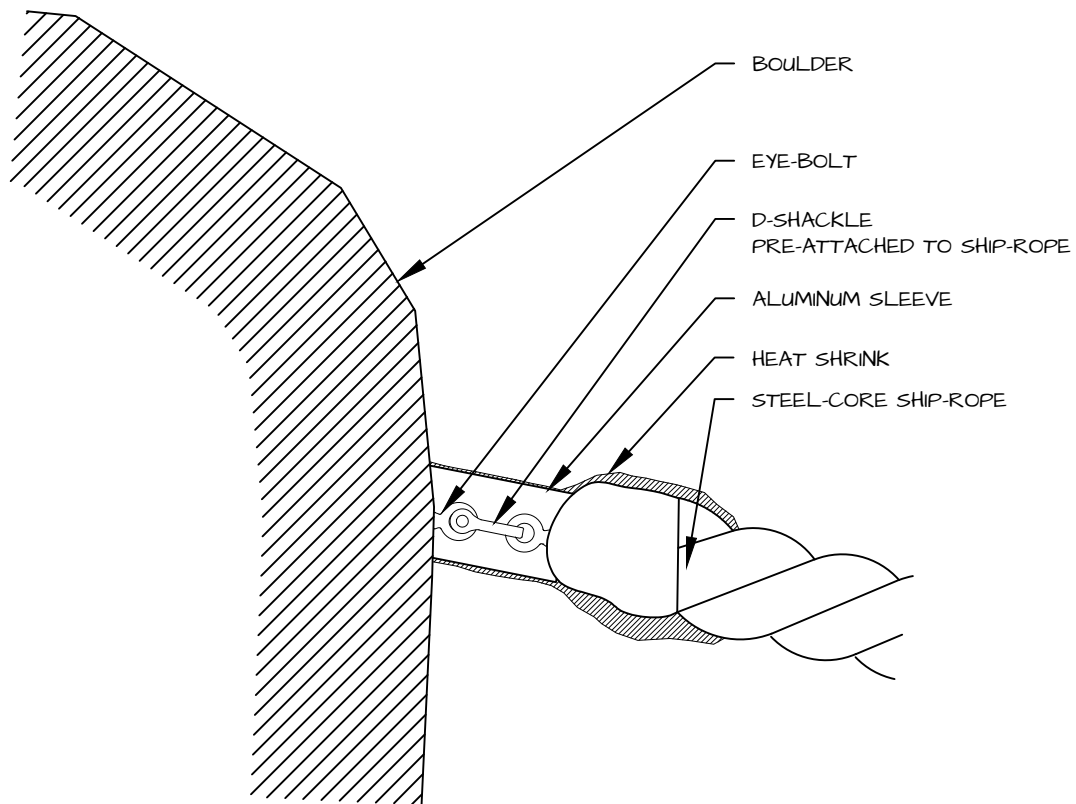
INSTALL DRAWING

PAGE	SCALE @ 8.5x11	DRAWN	CHECKED	PHONE NUMBER:
2 OF 2	N.T.S.	RC	PR	1-877-733-7456

# ROPE - BOULDER CONNECTION

## ATTACHMENT NOTES

1. SLIDE HEAT SHRINK OVER SHIP-ROPE D-SHACKLES.
2. ATTACH D-SHACKLES TO BOULDER ATTACHMENT BOLTS AND TIGHTEN.
3. WITH A HEAT GUN, SLOWLY AND EVENLY HEAT THE HEAT SHRINK UNTIL IT TIGHTENS AROUND ALL ATTACHMENTS.



- ATTACHMENT DETAIL -



### DOUBLE BOULDER CLIMBER WITH SHIP-ROPE

PRODUCT NUMBER  
NI-PG-903-03

## INSTALL DRAWING

PAGE	SCALE @ 8.5x11	DRAWN	CHECKED	PHONE NUMBER:
3 OF 2	1:30	RC	PR	1-877-733-7456