

NOTE - FOOT PRINT MAY VARY DUE TO DIAMETER OF THE BOULDER

**NOTE - THIS IS A SUGGESTED NATURE'S INSTRUMENT LAYOUT. BOULDERS POSITIONS CAN BE ADJUSTED TO MEET DESIGN REQUIREMENTS. ANY CHANGES MUST COMPLY WITH WRITTEN DETAIL AND PROTECTIVE SAFETY ZONE **



TRIPLE BOULDER CLIMBER WITH NET & ROPE

PRODUCT NUMBER
NI-PG-904-05

LAYOUT PLAN

PAGE 1 OF 1	SCALE @ 8.5x11 1:80	DRAWN RC	CHECKED PR	PHONE NUMBER: 1-877-733-7456
----------------	------------------------	-------------	---------------	---------------------------------

COMPONENTS

- NATURE'S INSTRUMENTS NI-PG-904-05 TRIPLE BOULDER CLIMBER INCLUDES:-
- GRANITE BOULDER WITH FLAT BOTTOM & PRE-ATTACHED GALVANIZED BOULDER CLEATS: x3
- STEEL-CORE NET CLIMBER WITH PRE-ATTACHED D-SHACKLES: x1
- STEEL-CORE ROPE WITH PRE-ATTACHED D-SHACKLES: x1
- NET CLIMBER GROUND ATTACHMENT BOLT: x2
- TURNBUCKLE: x12
- D-SHACKLE: x12
- 13mm [½"] Ø x 203mm [8"] GALVANIZED THREADED ROD WITH NUT & WASHER: x32
- REDHEAD A7 ACRYLIC EPOXY
- HEAT SHRINK

GRAVEL, CONCRETE, WIRE MESH REINFORCEMENT & PROTECTIVE SAFETY SURFACING ARE NOT SUPPLIED.

NOTES

- FOLLOW LAYOUT FOR POSITIONING OF BOULDERS.
- BOULDER SIZES MAY VARY, CONSULT WITH NATURE'S INSTRUMENTS REP OR DESIGNER TO CONFIRM LAYOUT BEFORE INSTALLING FOOTINGS
- ATTACH NET CLIMBER TO ATTACHMENT POINTS (DO NOT TIGHTEN) ON EACH BOULDER.
- STRETCH OUT THE SIDE ATTACHMENT POINTS OF NET CLIMBER TO CHECK THE FOOTING LOCATIONS. FOLLOW INSTALLATION METHOD FOR FOOTING AND GROUND ATTACHMENT.
- ALL EXPOSED ATTACHMENT POINTS MUST BE COVERED WITH 6" DUAL WALL HEAT SHRINK:-
 - POSITION HEAT SHRINK TO COVER ATTACHMENT BOLTS ON BOULDERS AND D-SHACKLES ON NET CLIMBER.
 - WITH A HEAT GUN, SLOWLY AND EVENLY HEAT THE HEAT SHRINK UNTIL IT TIGHTENS AROUND ALL ATTACHMENTS.

INSTALLATION

1. BOULDER SHAPES AND SIZES VARY; INSTALLED HEIGHT OF BOULDER TO BE NO TALLER THAN 1830mm [72"] ABOVE FINISHED GRADE.
2. BOULDER MUST BE PLACED AT LEAST 1830mm [72"] AWAY FROM ADJACENT OBJECTS AND MUST HAVE A PROTECTIVE SAFETY SURFACE SUITABLE FOR A 2438mm [96"] FALL HEIGHT, REFER TO CONSULTANTS RECOMMENDATIONS.
3. SUBGRADE TO BE MECHANICALLY COMPACTED TO 95% S.P.D.D.
4. GRAVEL BASE TO BE 305mm [12"] DEPTH CRUSHED GRAVEL (OR 19mm [¾"] CLEAR GRAVEL) COMPACTED TO 95% S.P.D.D. AND MUST EXTEND AT LEAST 152mm [6"] BEYOND THE EDGE OF THE CONCRETE PAD.
5. CONCRETE PAD TO BE 305mm [12"] THICK AND MUST EXTEND AT LEAST 305mm [12"] BEYOND ALL SIDES OF THE BOULDER.
6. CONCRETE TO BE 32MPA WITH A MAXIMUM SLUMP OF 76mm [3"].
7. CONCRETE TO BE REINFORCED WITH 6"x6" WIRE MESH.
8. ALL STEEL REINFORCEMENT MUST HAVE AT LEAST 5mm [2"] CONCRETE COVERAGE.
9. PLACE BOULDER ON THE CENTRE OF THE CONCRETE PAD AND MOUNT TO PAD USING ATTACHED BOULDER CLEATS:
 - 9.a. DRILL HOLES FOR 13mm [½"] Ø THREADED RODS.
 - 9.b. CLEAN OUT HOLES AND FILL WITH EPOXY.
 - 9.c. THREAD RODS INTO PLACE.
 - 9.d. TIGHTEN NUT AND WASHER ONTO THREADED ROD. DO NOT FULLY TIGHTEN UNTIL 2 HOURS AFTER INSTALLING ACRYLIC EPOXY.

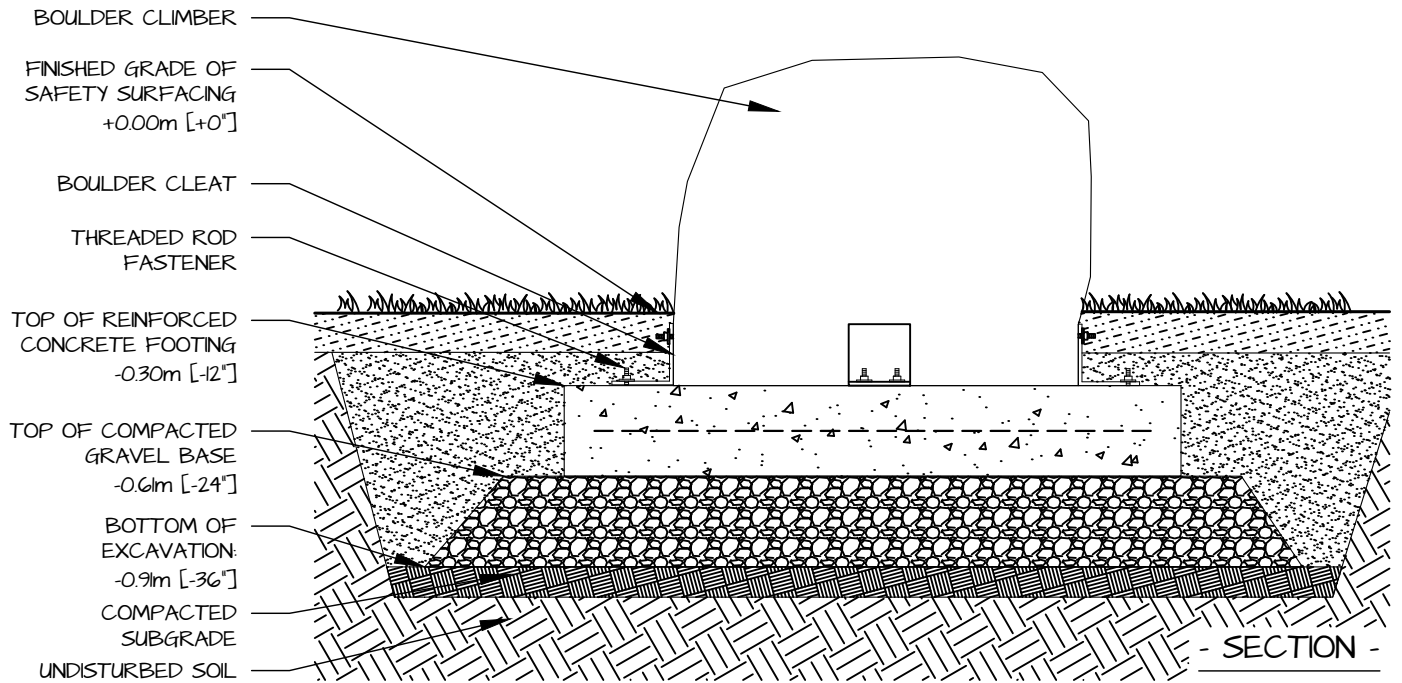


TRIPLE BOULDER CLIMBER WITH NET & ROPE

PRODUCT NUMBER
NI-PG-904-05

INSTALL DRAWING

PAGE	SCALE @ 85x11	DRAWN	CHECKED	PHONE NUMBER:
1 OF 5	1:25	RC	PR	1-877-733-7456



TRIPLE BOULDER CLIMBER WITH NET & ROPE

PRODUCT NUMBER
NI-PG-904-05

INSTALL DRAWING

PAGE	SCALE @ 8.5x11	DRAWN	CHECKED	PHONE NUMBER:
2 OF 5	1:25	RC	PR	1-877-733-7456

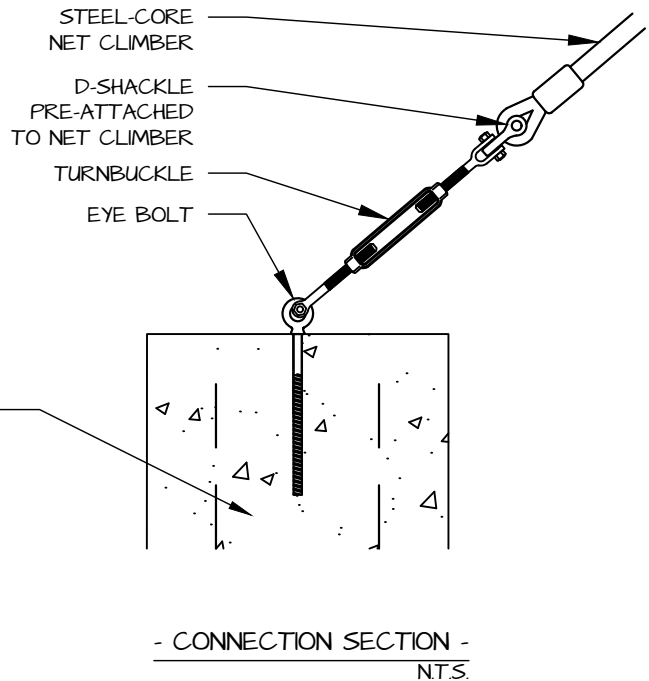
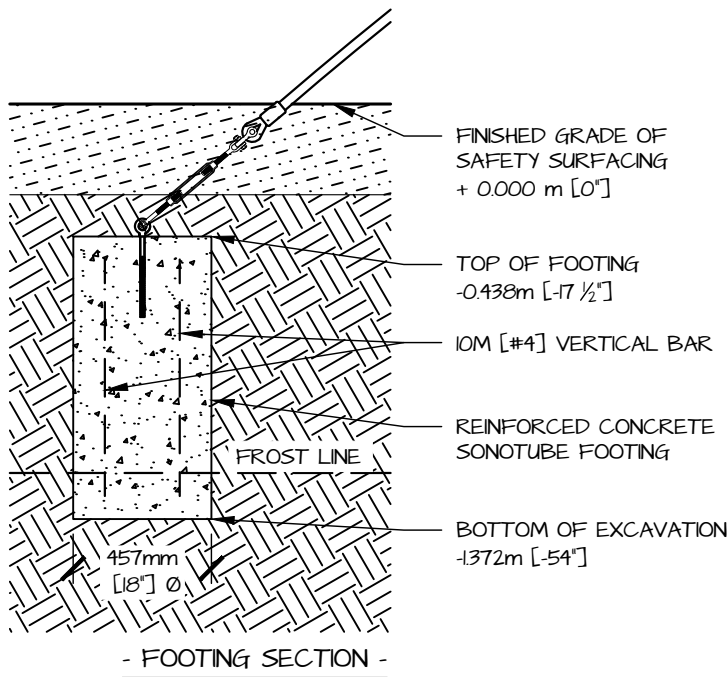
NET - GROUND CONNECTION

FOOTING NOTES

1. DEPTH OF CONCRETE FOOTING MUST EXTEND TO THE FROST LINE FOR YOUR REGION; 914-1219mm [36"-48"] BELOW FINISHED GRADE.
2. CONCRETE TO BE 32 MPa WITH A MAXIMUM SLUMP OF 76mm [3"].
3. CONCRETE TO BE REINFORCED WITH 2 @ 10M VERT. BARS.
4. ALL STEEL REINFORCEMENT MUST BE PLACED AT LEAST 51mm [2"] FROM SOIL AND 76mm [3"] FROM FORMS.

ATTACHMENT NOTES

1. VERIFY YOUR NET CONNECTION POINTS ALL MATCH UP BEFORE SECURING THE NET TO ANY POINT.
2. STRETCH OUT THE BOTTOM ATTACHMENT POINTS UNTIL THE NET IS TAUT IN THE ORIENTATION SHOWN IN THE LAYOUT.
3. MARK THE ATTACHMENT POINTS ON THE CONCRETE FOOTING AND DRILL A 14mm [$\frac{9}{16}$ "] Ø HOLE IN EACH LOCATION.
4. CLEAN OUT HOLES, FILL WITH EPOXY AND THREAD EYE BOLTS INTO PLACE.
5. ONCE EPOXY HAS FULLY CURED, ATTACH THE TURNBUCKLES TO THE EYE-BOLTS IN THE FOOTINGS.
6. SLIDE HEAT SHRINK WRAP ONTO THE NET AT THE ATTACHMENT POINT.
7. CONNECT THE D-SHACKLE TO THE TURNBUCKLE.
8. DO NOT TIGHTEN THE TURNBUCKLE CRANK UNTIL EVERYTHING IS SECURE.



TRIPLE BOULDER CLIMBER WITH NET & ROPE

PRODUCT NUMBER
NI-PG-904-05

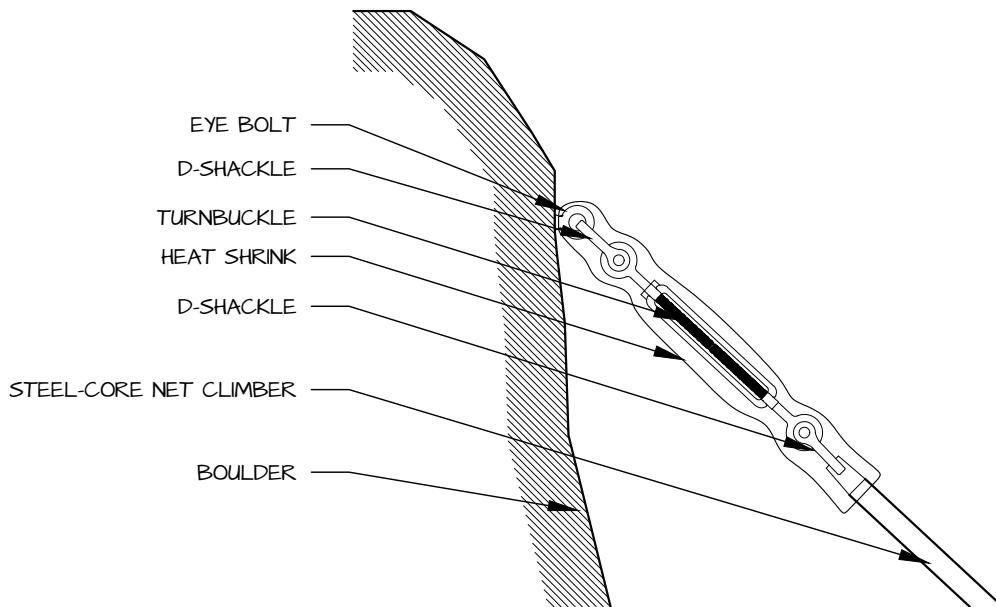
INSTALL DRAWING

PAGE	SCALE @ 8.5x11	DRAWN	CHECKED	PHONE NUMBER:
3 OF 5	1:25	RC	PR	1-877-733-7456

NET - BOULDER CONNECTION

ATTACHMENT NOTES

1. VERIFY YOUR NET CONNECTION POINTS ALL MATCH UP BEFORE SECURING THE NET TO ANY POINT.
2. STRETCH OUT THE BOTTOM ATTACHMENT POINTS UNTIL THE NET IS TAUT IN THE ORIENTATION SHOWN IN THE LAYOUT.
3. MARK THE ATTACHMENT POINTS ON THE BOULDER AND DRILL A 14mm [$\frac{9}{16}$] Ø HOLE IN EACH LOCATION.
4. CLEAN OUT HOLES, FILL WITH EPOXY AND THREAD EYE BOLTS INTO PLACE.
5. ONCE EPOXY HAS FULLY CURED, ATTACH THE TURNBUCKLES TO THE EYE-BOLTS IN THE BOULDER.
6. SLIDE HEAT SHRINK WRAP ONTO THE NET AT THE ATTACHMENT POINT.
7. CONNECT THE D-SHACKLE TO THE TURNBUCKLE.
8. DO NOT TIGHTEN THE TURNBUCKLE CRANK UNTIL EVERYTHING IS SECURE.



- ATTACHMENT DETAIL: NET TO BOULDER -



TRIPLE BOULDER CLIMBER WITH NET & ROPE

PRODUCT NUMBER
NI-PG-904-05

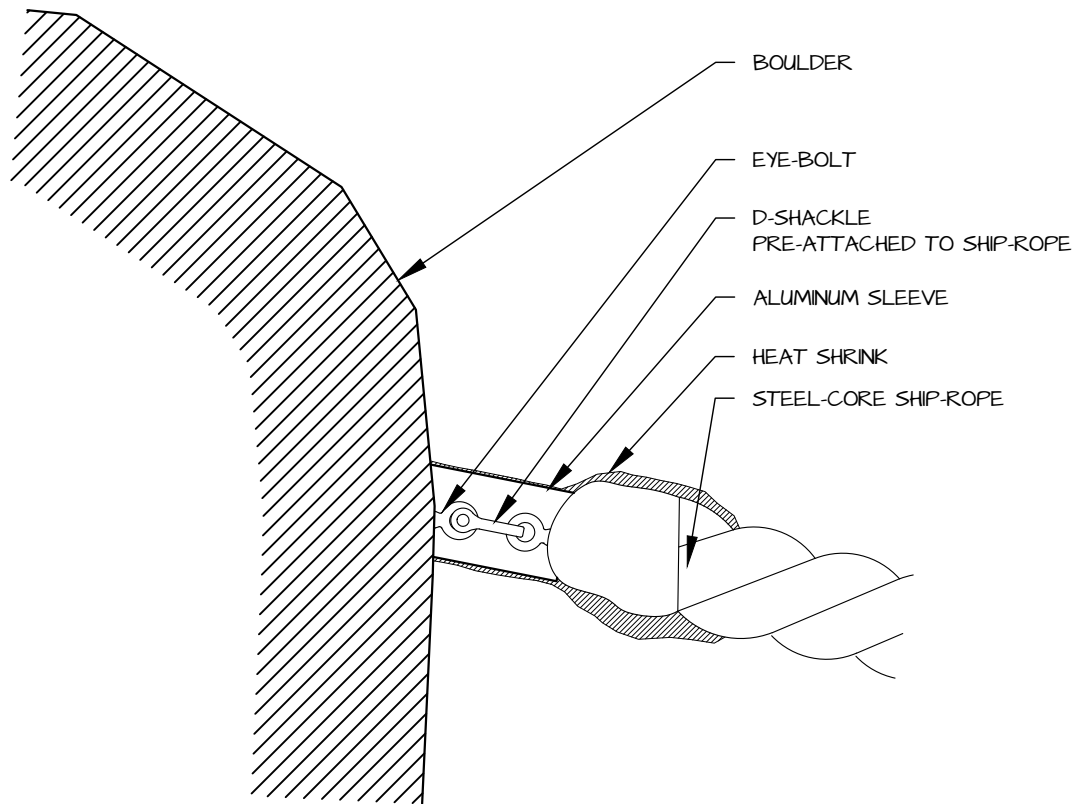
INSTALL DRAWING

PAGE	SCALE @ 8.5x11	DRAWN	CHECKED	PHONE NUMBER:
4 OF 5	1:25	RC	PR	1-877-733-7456

ROPE - BOULDER CONNECTION

ATTACHMENT NOTES

1. SLIDE HEAT SHRINK OVER SHIP-ROPE D-SHACKLES.
2. ATTACH D-SHACKLES TO BOULDER ATTACHMENT BOLTS AND TIGHTEN.
3. WITH A HEAT GUN, SLOWLY AND EVENLY HEAT THE HEAT SHRINK UNTIL IT TIGHTENS AROUND ALL ATTACHMENTS.



- ATTACHMENT DETAIL -



TRIPLE BOULDER CLIMBER WITH NET & ROPE

PRODUCT NUMBER
NI-PG-904-05

INSTALL DRAWING

PAGE	SCALE @ 8.5x11	DRAWN	CHECKED	PHONE NUMBER:
5 OF 5	1:25	RC	PR	1-877-733-7456