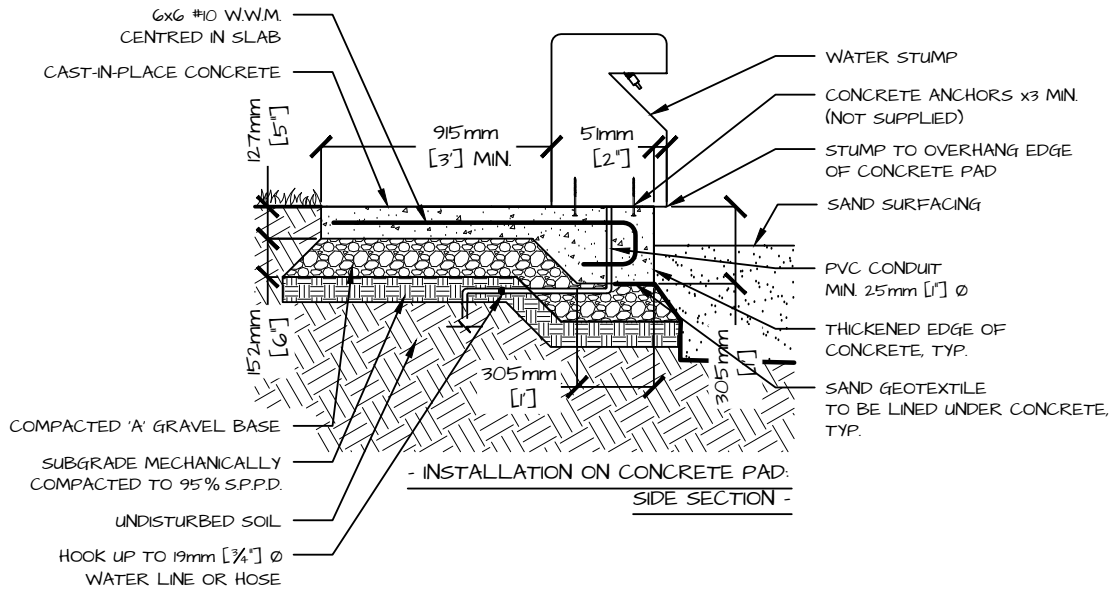


COMPONENTS

NATURE'S INSTRUMENTS NI-PG-506-03.01 WATER STUMP, NI PACKAGE INCLUDES:-

- 457mm [18"] Ø CARVED LOG STUMP: x 1
- WITH PRE-INSTALLED FAUCET & 19mm [¾"] Ø WATER LINE HOOK-UP

WATER SUPPLY LINE, CONCRETE ANCHORS, CONCRETE PAD AND/OR GRANULAR BASE COURSE ARE NOT SUPPLIED.



DETAIL

WATER STUMP

PRODUCT NUMBER	PAGE	SCALE @ 0.5x1	DRAWN	CHECKED	PHONE NUMBER
NI-PG-506-01	1 OF 2	N.T.S.	SE	SE	1-877-733-7459

NOTES

1. THE WATER STUMP IS A CHILD-ACTIVATED WATER PUMP THAT IS DESIGNED TO BE OPERATED WITH TWO FEET PLANTED FIRMLY ON THE GROUND.
2. POSITION THE WATER STUMP ACCORDING TO THE LAYOUT.
3. IF THE WATER STUMP IS INTENDED TO DRAIN INTO A SAND AREA, THE STUMP MUST BE FASTENED TO A SOLID BASE (IE. C.I.P. CONCRETE PAD OR DECK) AND MUST OVERHANG THE EDGE OF THE BASE BY 50mm [2"] FOR WATER RUNOFF INTO THE SAND.
13. AFTER CONCRETE HAS CURED, CONNECT THE WATER SUPPLY LINE TO THE WATER STUMP.
14. TEST THE PLUMBING.
15. IF THERE ARE NO LEAKS, FASTEN THE WATER STUMP TO THE CONCRETE PAVING USING AT LEAST 3 CONCRETE ANCHORS (NOT SUPPLIED). INSTALL THE ANCHORS AS PER THE MANUFACTURER'S INSTRUCTIONS.

INSTALLATION ON C.I.P. CONCRETE PAD:

4. CONCRETE TO BE 125mm [5"] THICK.
5. GRANULAR BASE TO BE COMPACTED TO 98% S.P.D.D AT A TOTAL DEPTH OF 150mm [6"].
6. FINISHED SURFACES TO HAVE A CROSS-SLOPE OF 2%, TO SHED WATER, TYP.
7. CONCRETE TO BE 32MPA.
8. CONCRETE SLUMP TO BE 75 - 140mm [3' - 5 1/2"].
- 8.1. ENSURE SLUMP VARIATION BETWEEN DIFFERENT CONCRETE BATCHES IS NO MORE THAN 30mm [1 1/4"].
9. WELDED WIRE REINFORCEMENTS: LAP ONE AND ONE-HALF MESH SPACES AT SPLICES AND WIRE IN CONTACT.
10. ADJACENT TO ALL FORM WORK SHALL BE FINISHED WITH A TOOL PRODUCING A 5mm [1/4"] ROUNDED EDGE AND SMOOTH HORIZONTAL SURFACE OF 50mm [2"] DEPRESSED 5mm [1/4"].
11. TOP SURFACE TO BE NON-SLIP BROOM FINISH.
12. BEFORE POURING CONCRETE, INSTALL 25mm [1"] MIN. Ø PVC CONDUIT IN THE LOCATION OF THE WATER HOOK-UP

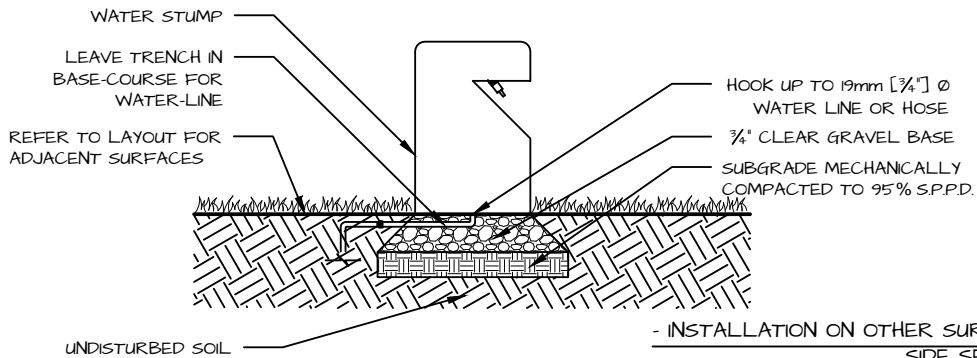
- 15.1. ENSURE THE ANCHORS ARE EVENLY SPACED ON THE BOTTOM OF THE WATER STUMP.
- 15.2. ENSURE THE WATER STUMP OVERHANGS THE PAD BY 51mm [2"].
16. MEET AND MATCH EDGES WITH ADJACENT SURFACING.

INSTALLATION ON DECK:

17. REFER TO NI-PG-506-03.02 FOR INSTALLATION ON DECK.

INSTALLATION ON OTHER SURFACES:

18. INSTALL 150mm [6"] DEPTH GRANULAR BASE COURSE UNDER THE STUMP.
- 18.1. GRANULAR BASE COURSE TO BE 3/4" CLEAR GRAVEL, TYP.
- 18.2. LEAVE A TRENCH IN THE TOP OF THE BASE COURSE FOR THE WATER SUPPLY HOOK-UP LINE.
19. CONNECT THE WATER STUMP TO A HOSE OR WATER SUPPLY LINE.
20. FOLLOW ADJACENT SURFACING INSTALLATION DETAILS. RESTORE ADJACENT SURFACING TO PRE-CONSTRUCTION CONDITION IF SPECIFIED TO REMAIN UNDISTURBED.



- INSTALLATION ON OTHER SURFACES:  
SIDE SECTION -



DETAIL						
WATER STUMP						
PRODUCT NUMBER	PAGE	SCALE @ 0.5X	DRAWN	CHECKED	PHONE NUMBER	
NI-PG-506-03.01	2 OF 2	N.T.S.	SE	SE	1-877-733-7459	