

COMPONENTS

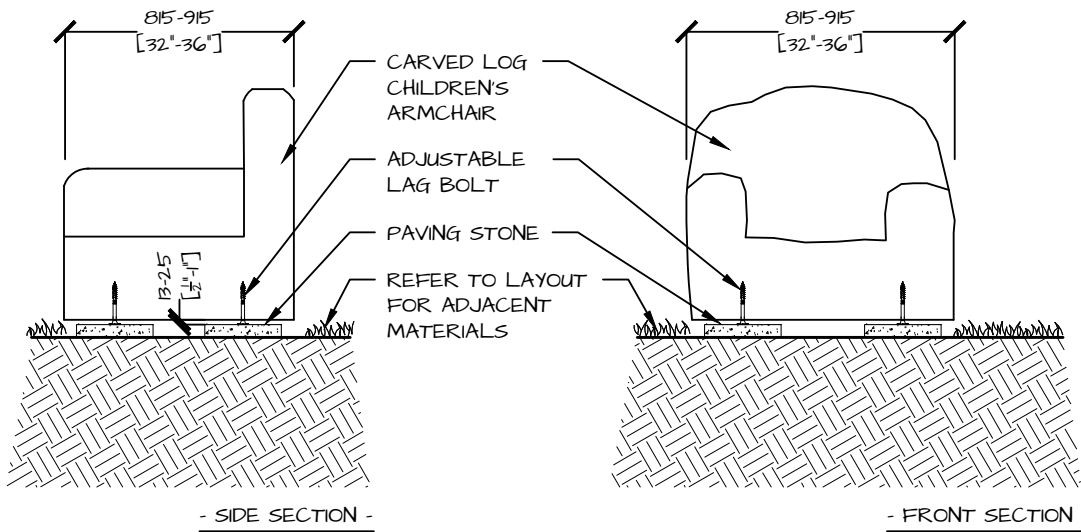
NATURE'S INSTRUMENTS NI-PG-704-04 813-915mm x 813-915mm [32'-36" x 32'-36"] CARVED HARDWOOD LOG CHILDRENS ARMCHAIR.

- INCLUDES 4 LAG BOLTS INSTALLED IN THE BOTTOM OF THE ARMCHAIR.
NOTE: THE LAG BOLTS WILL BE SCREWED IN FLUSH WITH THE WOOD SURFACE (FOR SHIPPING) AND WILL REQUIRE ADJUSTMENT PRIOR TO INSTALLATION.

4 PAVING STONES, MAX 51 mm [2"] THICK, 305mm [12"] WIDE ARE NOT SUPPLIED.

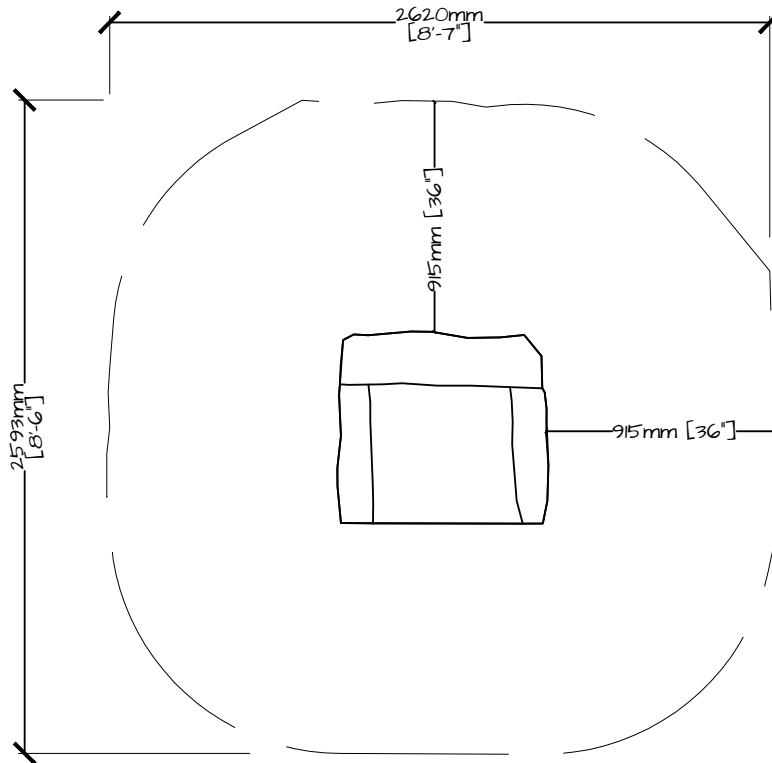
NOTES

1. PLACEMENT OF ARMCHAIR TO ALLOW FOR CIRCULATION, IT IS RECOMMENDED THAT AT LEAST 915 mm [36"] CLEAR SPACE BE ALLOCATED AROUND ALL SIDES OF THE CHAIR. 1220 mm [48"] CLEAR SPACE IS PREFERRED.
2. PLACE PAVING STONES ON FIRM STABLE GROUND.
3. PARTIALLY UNSCREW THE LAG BOLTS ON THE BOTTOM OF THE ARMCHAIR SO THEY EXTEND 13 - 25 mm [1/2" - 1"] BEYOND THE WOOD SURFACE.
4. PLACE ARMCHAIR ON THE PAVING STONES SO THAT THE EXTENDED BOLTS ARE CENTRED OVER THE PAVING STONES. ENSURE THE PAVING STONES ARE NOT VISIBLE FROM ABOVE.
5. IF THE ARMCHAIR IS NOT LEVEL AND STABLE, ADJUST THE LENGTH OF THE LAG BOLTS.
6. FOLLOW ADJACENT SURFACING INSTALLATION DETAILS. RESTORE ADJACENT SURFACING TO PRE-CONSTRUCTION CONDITION UNLESS OTHERWISE SPECIFIED.



DETAIL						
CARVED LOG CHILDREN'S ARMCHAIR						
PRODUCT NUMBER	PAGE	SCALE @ DIMS	DRAWN	CHECKED	PHONE NUMBER	
NI-PG-704-04	1 OF 1	NT.S.	SE	SE	1-877-733-7459	

COPYRIGHT © 2016 NATURE'S INSTRUMENTS. DO NOT SCALE DRAWINGS. NOT FOR COMMERCIAL USE OR REPRINT WITHOUT EXPRESSED WRITTEN PERMISSION FROM NATURE'S INSTRUMENTS.



DETAIL

CARVED LOG CHILDREN'S ARMCHAIR - LAYOUT

PRODUCT NUMBER	PAGE	SCALE @ .05X	DRAWN	CHECKED	PHONE NUMBER
NI-PG-704-04	1 OF 1	NT.S.	SE	SE	1-877-733-7459

COPYRIGHT © 2016 NATURE'S INSTRUMENTS. DO NOT SCALE DRAWINGS. NOT FOR COMMERCIAL USE OR REPRINT WITHOUT EXPRESSED WRITTEN PERMISSION FROM NATURE'S INSTRUMENTS.