

LOG TUNNEL: PUBLIC USE

PRODUCT NUMBER
NI-PG-609-02

LAYOUT PLAN

PAGE	SCALE @ 8.5x11	DRAWN	CHECKED	PHONE NUMBER:
1 OF 1	1:25	RC	PR	1-877-733-7456

COMPONENTS

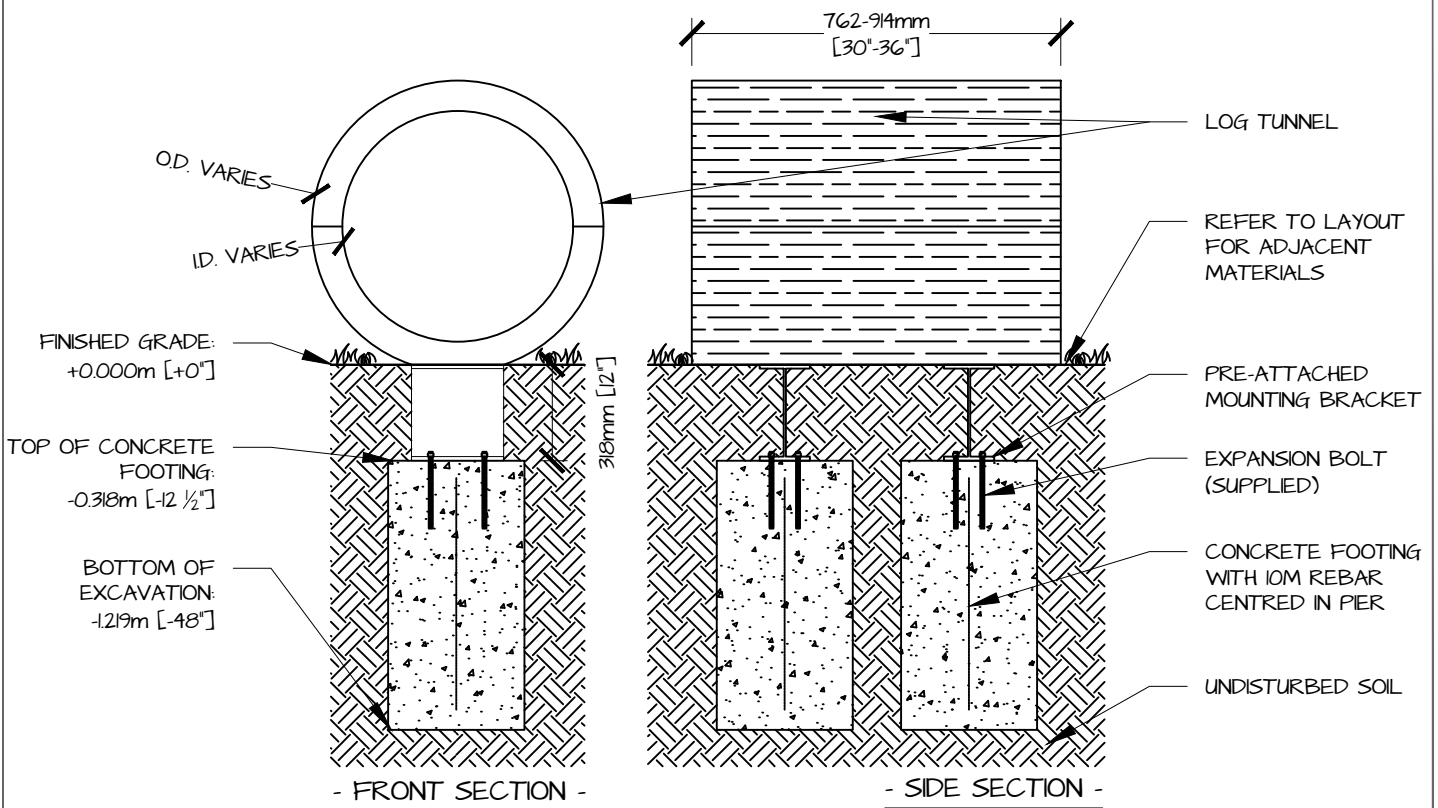
NATURE'S INSTRUMENTS NI-PG-609-02 LOG TUNNEL, OR APPROVED EQUAL NI PACKAGE INCLUDES:-

- LOG TUNNEL WITH PRE-ATTACHED MOUNTING BRACKETS: x1
- EXPANSION BOLT: x8

SONOTUBES, CONCRETE & REBAR ARE NOT SUPPLIED.

NOTES

1. LOG TUNNEL IS A GROUND LEVEL PLAY COMPONENT AND IS NOT INTENDED FOR CLIMBING.
2. PLACE TUNNEL AT LEAST 914mm [36"] AWAY FROM ADJACENT OBJECTS, AT LEAST 1830mm [72"] FROM HIGH TRAFFIC AREAS & GROSS MOTOR PLAY COMPONENTS AND AT LEAST 1219mm [48"] AWAY FROM FENCES.
3. LOG TUNNEL IS A UNIQUE NATURAL WOOD PRODUCT, THEREFORE THE MOUNTING CLEAT POSITIONS WILL VARY DUE TO THE NATURAL SHAPE OF THE LOG.
 - 3.1. MEASURE THE EXACT DISTANCE BETWEEN THE MOUNTING CLEATS BEFORE DIGGING FOOTING HOLES.
4. INSTALL THE TUNNEL ON TWO 457mm [18"] Ø REINFORCED CONCRETE PIER FOOTINGS.
5. FOOTINGS MUST EXTEND BELOW THE FROST LINE; AT LEAST 1219mm [48"] DEPTH BELOW FINISHED GRADE.
6. PLACE TUNNEL WITH MOUNTING CLEATS CENTRED ON PIERS.
7. BRACE THE TUNNEL AND DRILL 257mm [10"] DEEP INTO THE CONCRETE THROUGH EACH MOUNTING CLEAT HOLE.
8. INSTALL EXPANSION BOLTS.
9. RESTORE ADJACENT SURFACE TO ORIGINAL CONDITIONS.
10. ENSURE THAT THE ENDS OF TUNNEL ARE 5mm [2"] ABOVE FINISHED SURFACE.
11. FOLLOW ADJACENT SURFACING INSTALLATION DETAILS. RESTORE ADJACENT SURFACING TO PRE-CONSTRUCTION CONDITION IF SPECIFIED TO REMAIN UNDISTURBED.



HANDCRAFTED.

**Nature's
 INSTRUMENTS**
 • FOR YOUR PLAYGROUND •

LOG TUNNEL: PUBLIC USE

PRODUCT NUMBER
 NI-PG-609-02

INSTALL DRAWING

PAGE 1 OF 1	SCALE @ 85x11 1:25	DRAWN RC	CHECKED PR	PHONE NUMBER: 1-877-733-7456
----------------	-----------------------	-------------	---------------	---------------------------------